



Quick Screen Trading
The Ultimate Trading Tool

QST Version 7.5.72 Release Notes

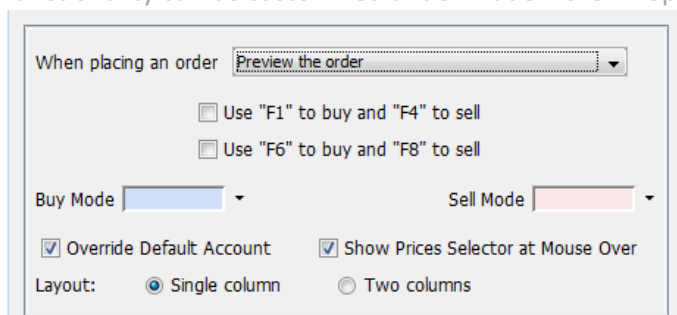
HIGHLIGHTS

- ***Changes to login method: password no longer saved locally, users can add extra security through Two Factor Authentication***
- ***Various new and expanded features, such as Trade Ticket, Trade Recap, Trade Summary and What If simulations***
- ***New columns, labels, and other improvements to existing frames, such as Quotes Monitor and Price Ladder***
- ***Cleaned up and reorganized certain Properties tabs to reduce clutter and make it easier to find a specific option***
- ***Various options for traders looking to place, replace or cancel orders as quickly as possible through shortcuts and quick pads, additional options to remove warning and confirmation messages***
- ***New options for sound mapping***
- ***New types of indicators and contingencies***
- ***Numerous bug fixes throughout the application***

1. A new logo is now displayed while the application is loading.
2. **Two Factor Authentication** has been implemented at the Login screen, and can be enabled for individual customers, for an additional layer of security.
3. **Two factor Authentication** codes can be requested and received via email, at the Login Screen.
4. The Login failure messages have been revamped to provide additional details.
5. The **“Remember my password”** checkbox has been removed from the Login Screen, to further enhance security along with 2FA.
6. Added a feature which allows to track inactivity after login, allowing us to enable a forced logout after a certain timeout if requested.
7. When the **front month** of a futures contract **expires** and it rolls over to the next month, there will now be a **rollover icon** and tooltip message to indicate that the change has happened. This will be visible in frames such as Quotes Monitor, Fixed Quotes Page and Charts.
8. **Trade Ticket** now supports using shortcut keys for fast order placement, “F1” to buy and “F4” to sell, or “F6” to buy and “F8” to sell.
Color customization for Buy Mode and Sell Mode has been also added, for easier order type mode acknowledgement.

Trade Ticket now has two layout options, “Single column” (the traditional look) and “Two columns”.

Functionality can be customized under Trade Ticker Properties.

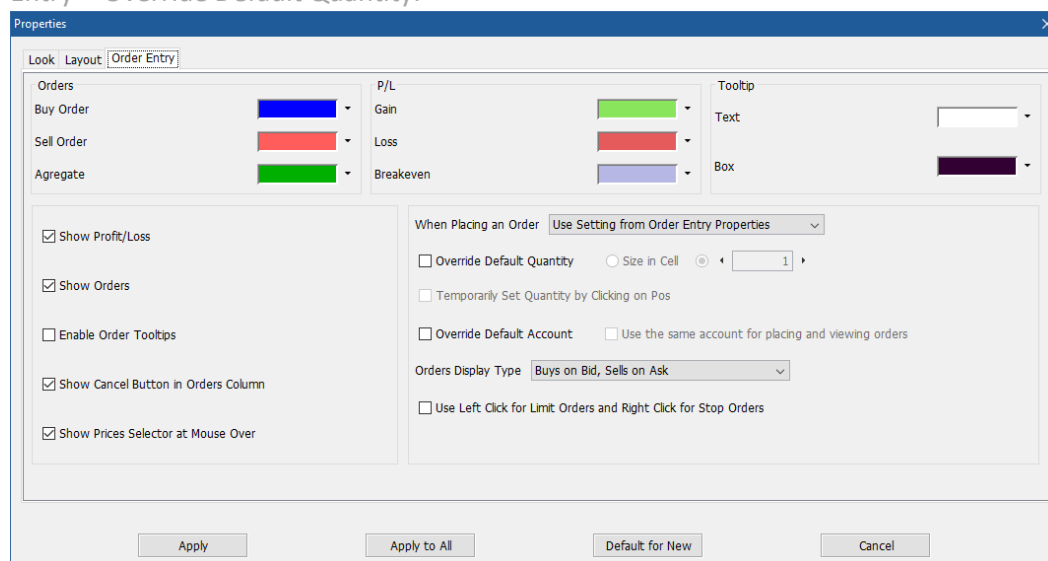


9. When opening the **Trade Ticket** frame for the first time, the quantity is now reset to zero, and you can now easily set the predefined button quantity by right-clicking on the quantity button.
10. Support for contingencies has been added to the **Trade Ticket** frame.

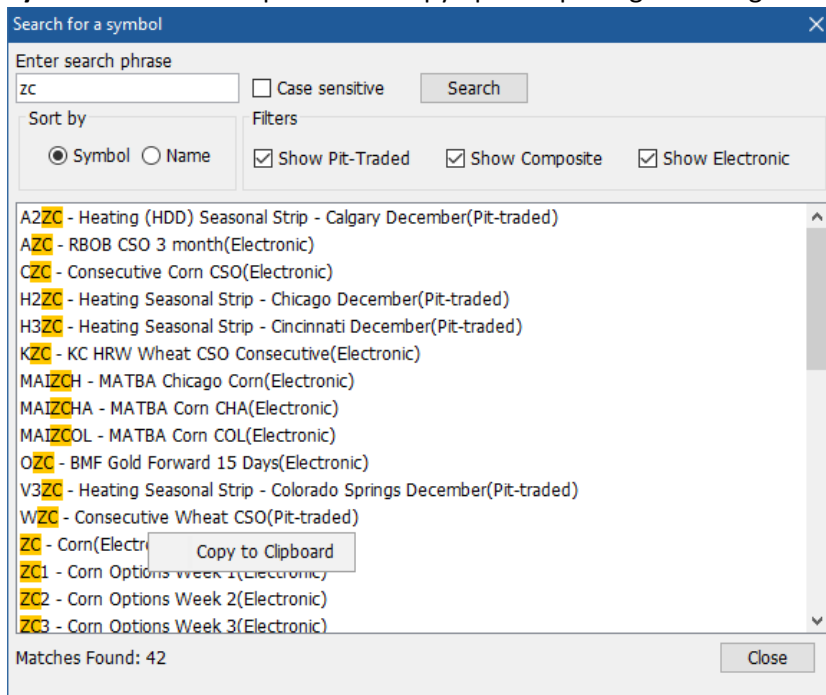
Contingent Orders must be enabled from Order Entry Properties -> Contingent Orders.

11. When using the Scale-in function for order placement in **Price Ladder**, the default order quantity is used in the dialog.

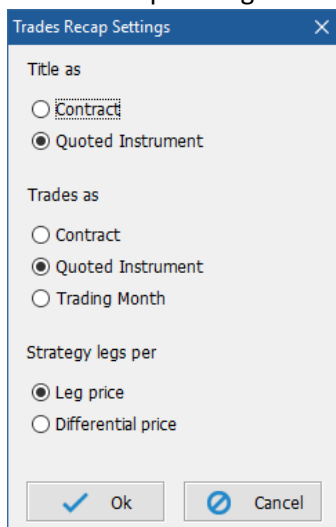
You can override the default quantity of the Price Ladder frame from the Price Ladder Properties -> Order Entry-> Override Default Quantity.



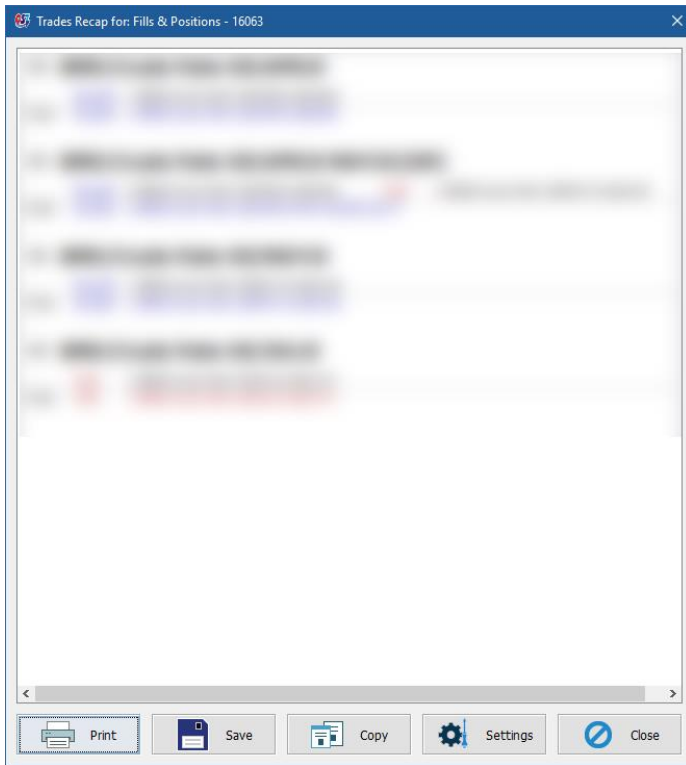
- 12. Linking the **Trade Ticket** frame with a Quotes Monitor will now make the Trade Ticket update the loaded contract based on the contract that is selected in Quotes Monitor.
- 13. **Quotes Monitor** now allows placing orders with the left/right click on the Last column, while the “B” / “S” buttons are active.
- 14. **Symbols Search** now provides a Copy option upon right clicking the searched symbol.



- 15. The **News** frame is now using a new HTML rendering browser.
- 16. An **order entry** accidental prevention mechanism has been implemented, for situations when the Enter key is pressed in a rapid succession in the main quick entry bar, and the order ticket.
- 17. If the order entry connection details are available, then the **Accounts combos** will display this information in the tooltip.
- 18. The Accounts Risk Monitor frame has new columns available, the Eligibility Level and Eligibility Level Incl Orders.
The displayed columns can be configured under Account Risk Monitor Properties -> Columns.
- 19. A Currency Selector has been added to the Accounts Risk Monitor frame, to easily change the values displayed to a different currency.
- 20. Trades Recap Settings have been added, which allows various customizations on how the trades are displayed.

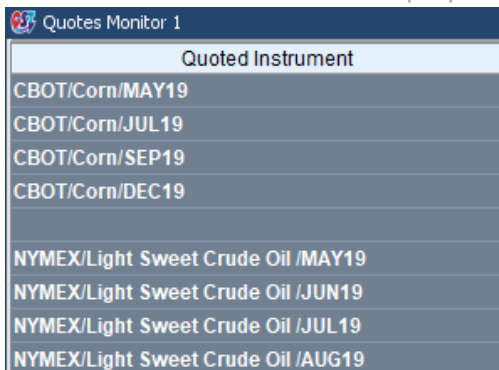


- 21. **Trades Recap** now has print functionality, and Copy to clipboard mechanism.

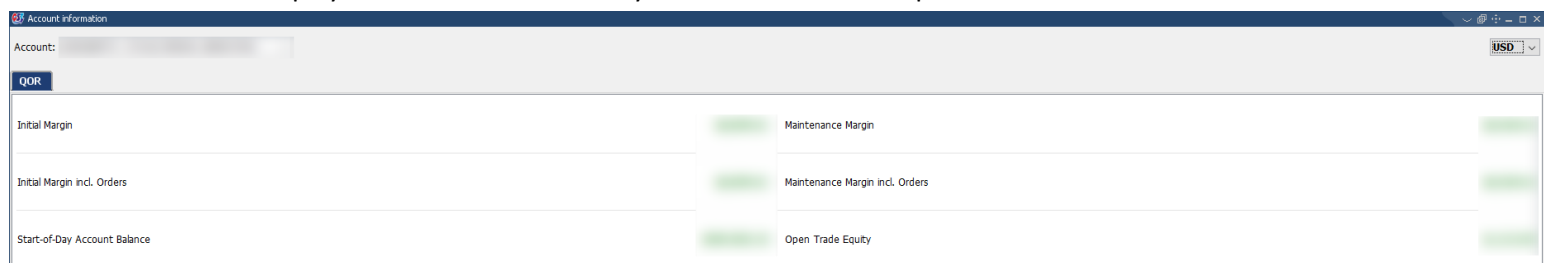


- 22. **New Workspace** – Create a new template dialog icon have been updated.
- 23. **RTD Linking** – Support has been added for placing orders from Excel through RTD requests.
- 24. The Greeks calculation rules have been updated for the **Advanced Options** frame.
- 25. A new “Quoted Instrument” column has been added to the internal frames, which displays a detailed naming convention for the contract.

It can be enabled from the frame properties -> Columns.



- 26. The Account Information frame has a new look, and a currency selector has been added, to easily change the values displayed to a different currency than the default one specific to the loaded account.



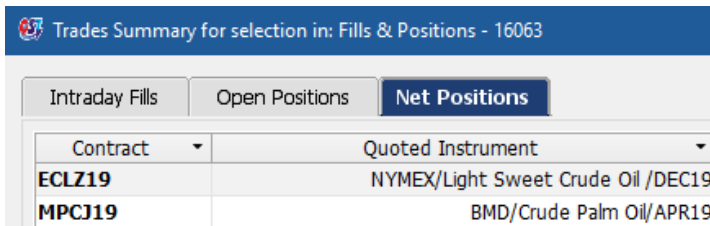
- 27. The Accounts section has been moved to the Accounts tab in the **Order Entry Properties** window.
- 28. The average prices in **Trades Summary** are now represented using 4 decimals.
- 29. Various order entry icon inconsistencies have been solved.

- 30. A new column "Ord. Chain #" has been added to the Orders & Positions Monitor frame, which represents a unique identifier for the whole order chain, which remains the same even when an order is modified or cancelled.



The new column can be added from the Orders & Positions Monitor Properties -> Columns.

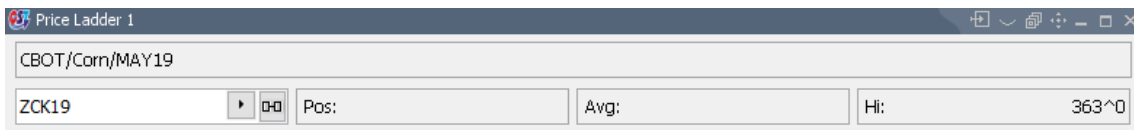
- 31. The Scale-In order options have been enabled in the drop-down menu over the gaps between the book levels in **Price Ladder**.
- 32. The Quoted Instrument entries in **Trades Recap** are now sorted alphabetically by Exchange, Symbol, and chronologically by month and year.
- 33. The **Trades Summary** frame has been made non-modal, for easier user interaction, and a Refresh button has been added which initiates a manual update for the trade selection. If there is no selection present, then the frame updates automatically when a new fill is received.
- 34. The Quoted Instrument column has been added to the **Trades Summary** frame.



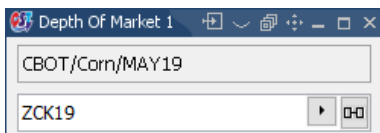
- 35. A property to show the "Quoted Instrument" on the top right corner of a **Chart** frame has been added. The Quoted Instrument display can be enabled from Chart Properties -> Advanced -> Show Quoted Instrument.



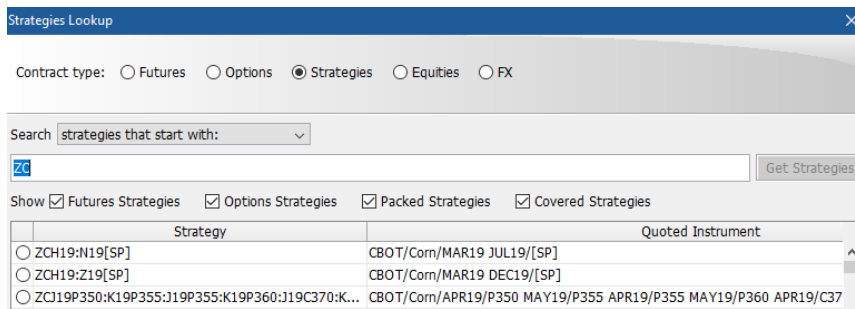
- 36. Quoted Instrument has been added to the **Price Ladder** frame. The Quoted Instrument display can be enabled from Price Ladder Properties -> Layout -> Show Quoted Instrument.



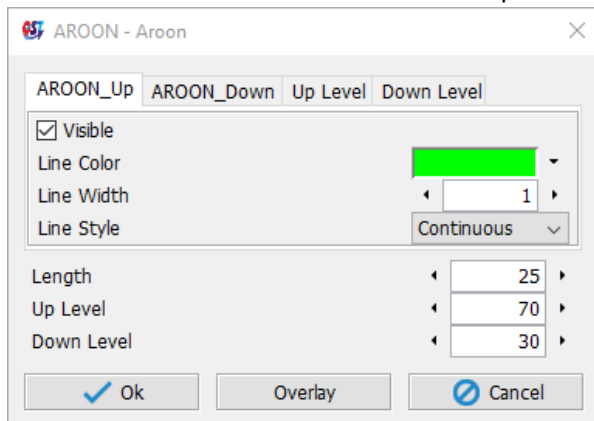
- 37. Quoted Instrument has been added to the Depth of Market frame. The Quoted Instrument display can be enabled from the Depth of Market Properties -> Layout -> Show Quoted Instrument.



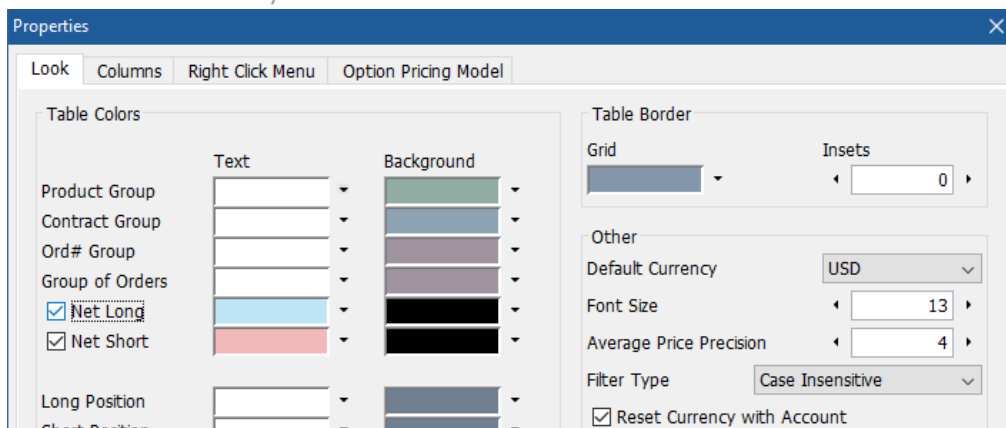
- 38. The Quoted Instrument column is now displayed in the **Contract Lookup** -> Strategies Lookup frame.



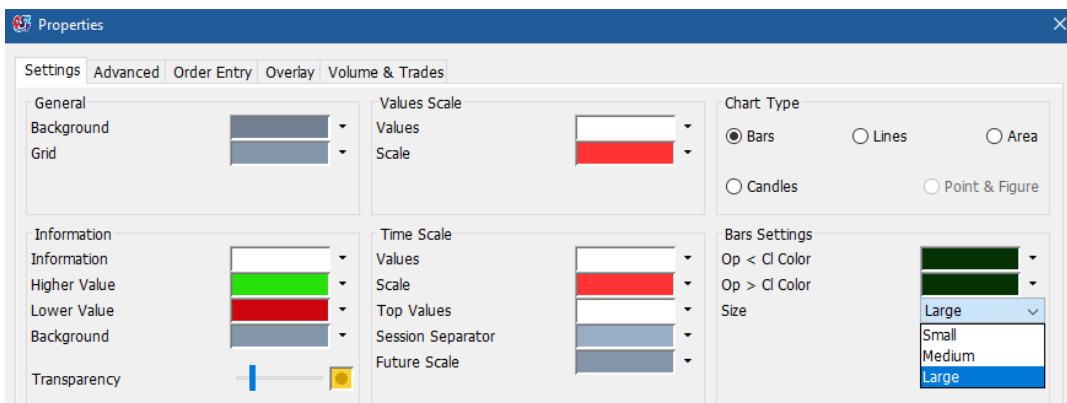
- 39. Packed strategies are now separated from the Covered ones in **Strategies Lookup**.
- 40. **Confirmation dialog** button icons have been revamped.
- 41. The **AROON Chart Indicator** now has the possibility to add Up and Down levels.



- 42. New Chart Indicators are available, **KDJ** indicator, and **VWAP** indicator.
- 43. A new property has been added to the **Orders & Positions Monitor** frame "*Reset Currency with Account*", which determines the currently selected currency and resets it to the account's base currency when a new account is loaded in the OPM frame.
The "*Reset Currency with Account*" option can be enabled from the Orders & Positions Monitor Properties -> Look -> Reset Currency with Account.

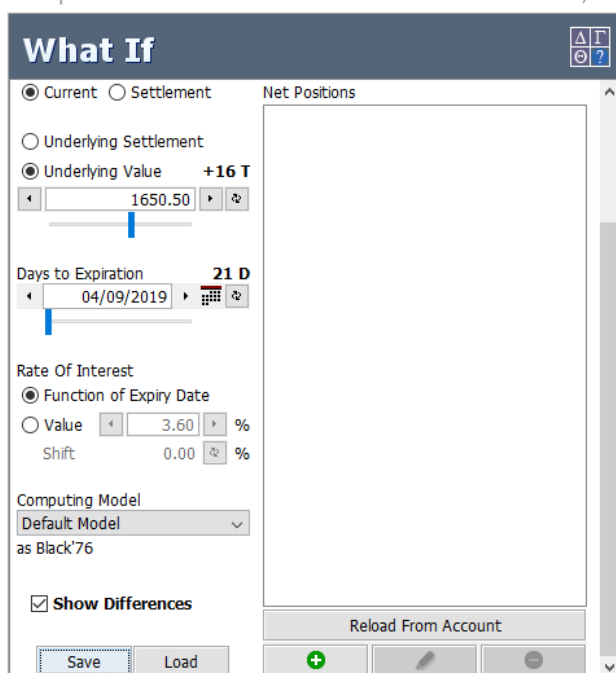


- 44. The **Account Information** frame has been updated so that it doesn't display N/A if the balance received from the provider is zero.
- 45. The ROI value is now properly calculated for options that are not USD denominated in the **Advanced Options** frame.
- 46. Various optimizations for received **Options** strike data.
- 47. The **Charts** frame now has three levels for the chart bar sizes: Small, Medium and Large.
Chart bar sizes can be configured from Chart Properties -> Settings -> Bars Settings (Size).
- 48. Hollowness has been added to the candles data view, when the reference is set to "Previous"
Chart Properties -> Settings -> Candles Settings.



49. You can now save What If simulations in the Advanced Options frame as a template, and load them at your convenience.

Templates can be saved from the What If screen, at the bottom -> Save.



50. Added color coding to Strikes in the Advanced Options frame. Prices that have Long or Short positions can now have a corresponding color in their cell.

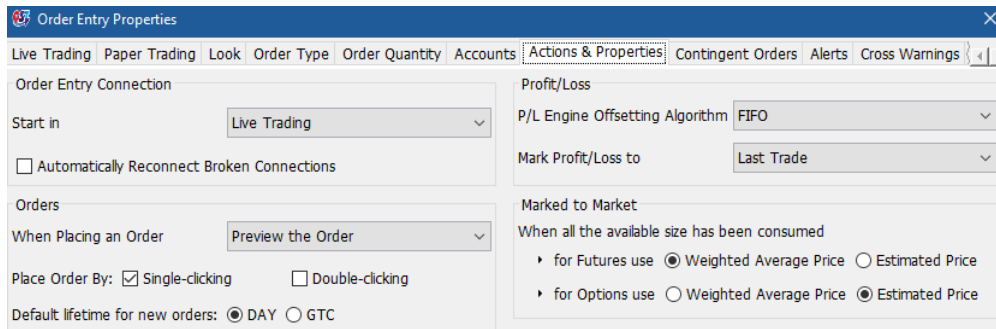
(This can be enabled from Advanced Options -> Properties -> Order Entry tab -> Check "Color Traded Strikes")

61.00 (1)		3330		59.25 (99)
56.00 (1)		3340		62.25 (1)
49.50 (1)		3350		67.75 (20)
44.25 (1)		3360		79.50 P
38.50 (1)		3370	Short 1	75.00 (1)
34.00 (1)		3380		81.50 (3)
29.75 (5)		3390		96.25 P
26.00 (1)		3400		102.75 P
23.25 (1)		3410		109.50 P
19.00 (1)		3420		116.50 P
16.25 (10)		3430		124.00 P
11.50 P		3440		131.75 P
11.75 (50)	Long 1	3450		139.75 P
9.25 (1)		3460		148.25 P
8.25 (5)		3470		156.75 P
6.75 (1)		3480		165.75 P

51. Various fixes and improvements for the Cancel/Replace order action.

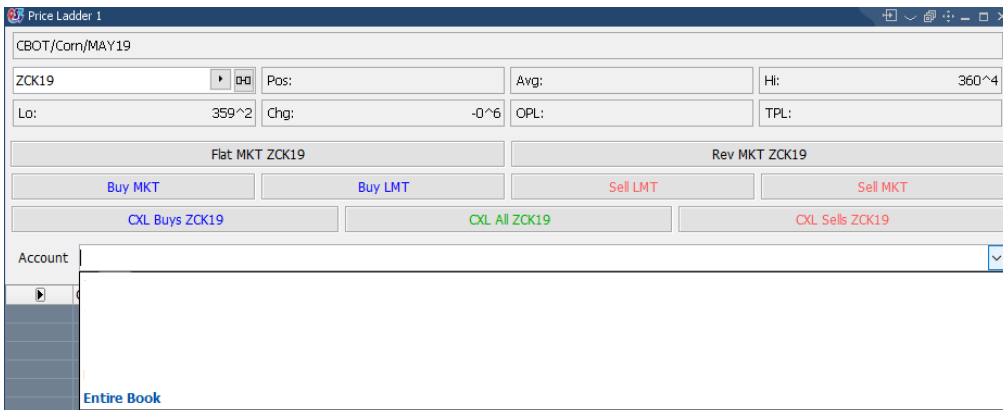
52. A new property has been added to the **Order Entry** screen, which allows setting the lifetime for new orders to GTC instead of Day.

This option can be enabled from Order Entry Properties -> Actions & Properties -> Default lifetime for new orders.

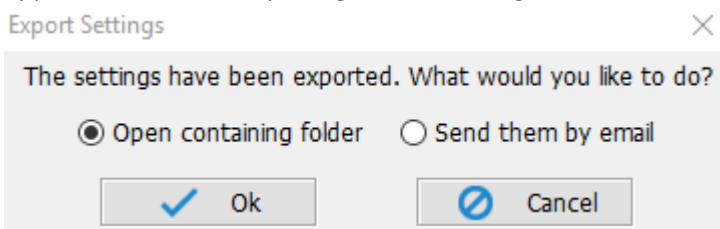


53. A new property has been added to reset the **Order Ticket** after order placement.
This option can be enabled from Order Entry Properties -> Actions & Properties -> Reset the Order Ticket after order placement.

54. **Price Ladder** allows using a single accounts combo box instead of two, for account view and order placement.
This option can be configured from the Price Ladder Properties -> Order Entry -> Override Default Account -> Use the same account for placing and viewing orders.



55. An option to move the **Entire Book** display to the top of the Accounts drop down list has been added.
This can be configured in Order Entry Properties -> Accounts -> Accounts order.
56. **Trades Recap** now works for account group and Entire Book as well.
57. The **Export Settings** functionality has been further improved, and after exporting the settings, a new prompt appears, that allows opening the containing folder, or sending them by email.



58. An option to play a **sound** when an order was cancelled is now available.
This option can be enabled from General -> Properties -> Sound Mappings.

Properties

Sound	Audio File
Alarm	
Error	pop.wav
Warning	pow.wav
Confirmation	cowbell.wav
Fill	doodledo.wav
Reject	chimedwn.wav
Order was placed	pow.wav
Order was placed by others	pow.wav
Order was cancelled	
Crossable BWS order	
Screenshot	

- 59. An option to display the Strategy legs by Leg Price or Differential Price has been added to the **Trades Recap**. This option can be configured from Trades Recap -> Settings.
- 60. The default **QOR** connection now updates the account password automatically based on the QST login.
- 61. Improvements and protection for inflight fills, on quantity update at cancel/replace.
- 62. The trading month is now used when sorting by Contract in the **Orders & Positions Monitor** frame
- 63. **SGD** currency has been added in the Currency selector.

Contract Description	Status	Fill Time	Posit		Group By
Light Sweet Crude Oil (WTI)(Electronic) April 2019		03/13/2019	Net	USD	Contract
Light Sweet Crude Oil (WTI)(Electronic) June 2019		03/13/2019	Net	RUB	ECLJ19
E-Mini S&P 500(Electronic) March 2019		03/14/2019	Net	SEK	ECLM19
				SGD	ESH19
				TRY	
				TWD	
				USD	
				ZAR	

- 64. Support for Server-Side Scale-In Iceberg orders has been added to the **Price Ladder** frame. These options can be seen by right clicking on an empty cell or over an existing order. Server-side contingencies must be enabled under Order Entry Properties -> Contingent Orders -> Enable Server-Side Contingency Placement.
- 65. An optional bid/ask separator has been added in the **Price Ladder**. The "Show Bids/Ask Separator" option can be enabled from the Price Ladder Properties -> Layout -> Show Bids / Asks Separator.

Chart	Bid Size	Price	Ask Size	
		1674.00	24	
		1673.50	38	
		1673.00	24	
		1672.50	22	
		1672.00	17	
		1671.5...		
	13	1671.00		
	19	1670.50		
	17	1670.00		
	17	1669.50		
	12	1669.00		

- 66. An optional quick ON/OFF Implied switch has been added to the **Price Ladder**. The "Show Implied Field" option can be enabled from the Price Ladder Properties -> Layout -> Show Implied Field

KLIH19

Size

Implied ON OFF

67. Added a function in **Price Ladder** that will allow users to quickly place an order at best buy or best ask. First, the Buy/Sell Buttons need to be enabled, after which you can control the behavior based on the setting in Order Entry tab.

This can be enabled from Price Ladder -> Properties -> Layout tab -> Check "Show Buy / Sell Buttons", then in the Order Entry tab, select between "Buy Bid / Sell Ask" or "Buy Ask / Sell Bid"

Buy Bid / Sell Ask - when a user places an order with the "Buy LMT" button, it will place a limit order on the best bid. Similarly placing an order with "Sell LMT" button will place the order on the best ask.

Buy Ask / Sell Bid - when a user places an order with "Buy LMT" button, it will place an order on the best ask. Similarly placing the order with "Sell LMT" button will place the order on the best bid.

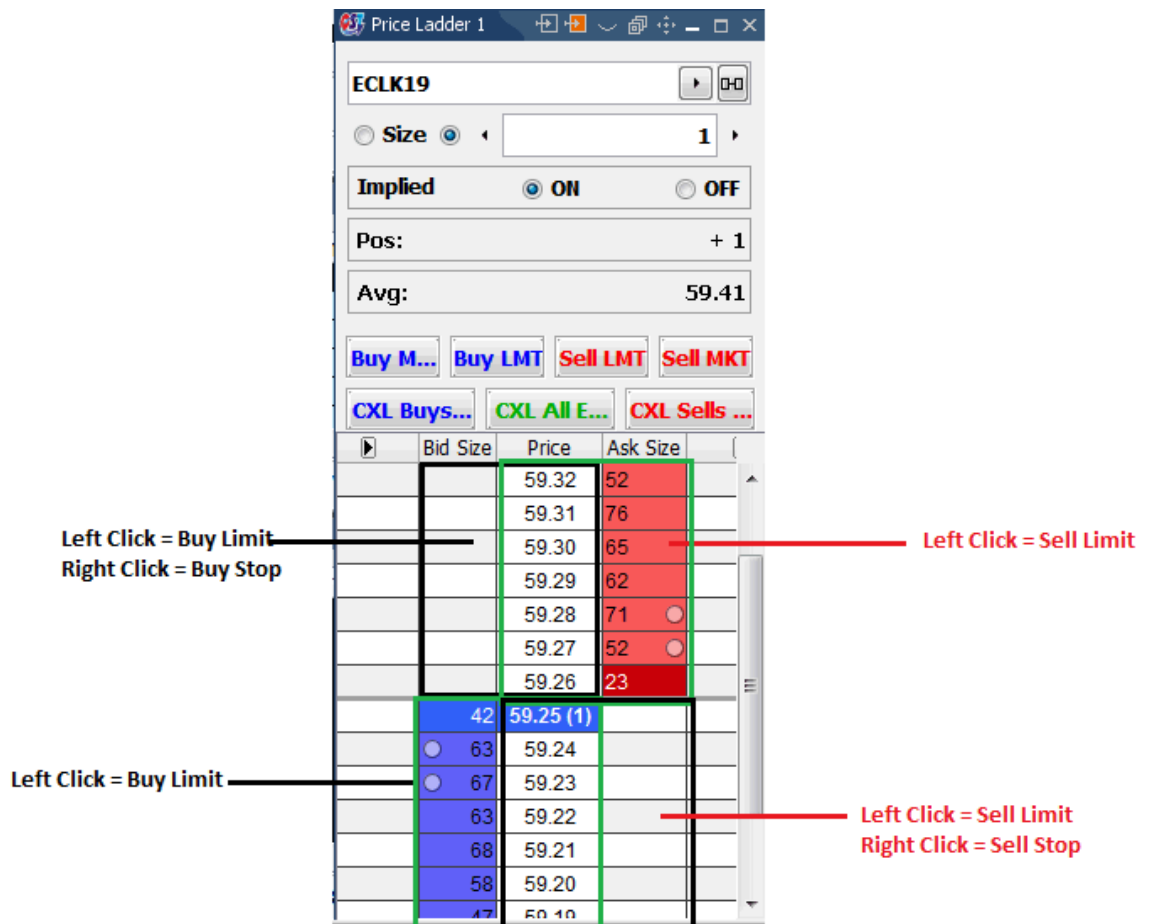
	Bid Size	Price	Ask Size	Volu
		2260	24	
		2213	1	78
		2208		73

68. An option to display Cancel buttons under the orders column has been added for the **Price Ladder** frame. The "Show Cancel buttons in orders column" option can be enabled from Price Ladder Properties -> Order Entry -> Show Cancel buttons in orders column.

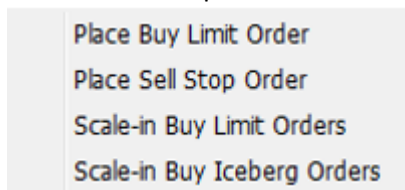
	Bid Size	Price	Ask Size	
		2816.25	121	
		2816.00	51	
		2815.75	54	
		2815.50	95	
		2815.25	55	✕ 7
		2815.00	54	
		2814.75	49	
		2814.50	35	
		2814.25	26	
		2814.00	12	
	4	2813.7...		
	23	2813.50		
	35	2813.25		
	57	2813.00		
	71	2812.75		
✕ 15	47	2812.50		
	56	2812.25		
	85	2812.00		
	45	2811.75		
	56	2811.50		

69. An option to use Left Click for Limit Orders, and Right Click for Stop Orders, has been added to the **Price Ladder**. This will also make it so that Left/Right click can be used for both Buy and Sell orders, depending on where you click in the bid/ask area.

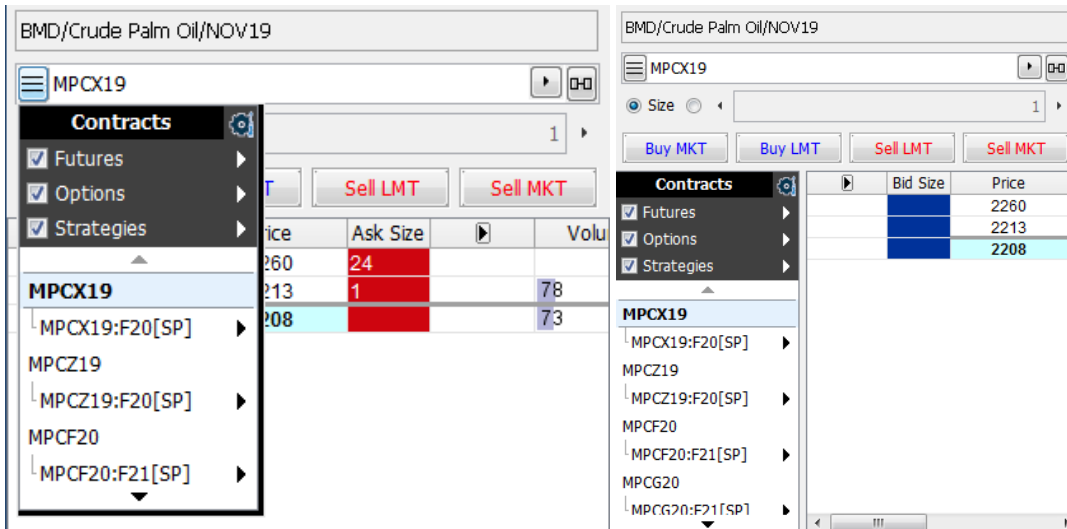
The "Use Left Click for Limit Orders and Right Click for Stop Orders" option can be enabled from Price Ladder Properties -> Order Entry -> Use Left Click for Limit Orders and Right Click for Stop Orders.



70. The drop-down menu to place an order in **Price Ladder**, now displays the order type and both buy and sell actions are now present.



71. Added an option in Price Ladder that allows users to override the default lifetime of orders, regardless of the setting in Order Entry Properties.
(This can be enabled from Price Ladder -> Properties -> Order Entry tab -> Check "Override Lifetime", then select between "DAY" or "GTC")
72. Added a function in Price Ladder that gives users an alternative for quickly changing between contracts. The change bar can be toggled on an off by clicking on its icon. *(This can be enabled from Price Ladder -> Properties -> Layout tab -> Check "Enable the Quick Contract Change Bar", then select between "Dropdown" and "Docked in Frame")*



73. An option to show or hide the Tooltip When Scrolled has been added to the **Price Ladder**. The "Show Tooltip When Scrolled" option can be enabled from Price Ladder Properties -> Layout -> Show Tooltip When Scrolled

The image shows two side-by-side screenshots of the Price Ladder table. The left screenshot shows the table with bid and ask sizes visible. The right screenshot shows the table with a tooltip visible over the bid size column.

Price	Bid Size	Ask Size	Price	Bid Size	Ask Size
2812.00	34	60	2811.25	51	216
2811.75	34	161	2811.00	49	183
2811.50	60	59	2810.75	62	177
2811.25	52	216	2810.50	84	217
2811.00	49	183	2810.25	44	206
2810.75	62	177	2810.00	48	361
2810.50	84	217	2809.75		167
2810.25	44	206	2809.50		200
2810.00		361	2809.25		85
2809.75		167	2809.00		39
2809.50		200	2808.75		45
2809.25		85	2808.50		169
2809.00		39	2808.25		104
2808.75		45	2808.00		92
2808.50		169	2807.75		81
2808.25		104	2807.50		14
2808.00		92	2807.25		
2807.75		81	2807.00		
2807.50		14	2806.75		
2807.25			2806.50		
2807.00			2806.25		
2806.75			2806.00		
2806.50			2805.75		
2806.25			2805.50		
2806.00			2805.25		
2805.75			2805.00		
2805.50					
2805.25					
2805.00					

74. Various improvements and bug fixes to the **Price Ladder** scrolling process, and bid/ask display. Bid/ask sizes are no longer hidden if the user is not in the middle of the scrolling processes, and if the inside market is not visible.
75. Added an option in **Price Ladder** to show a tooltip while hovering over a column that allows order placement. This will help users determine where they are clicking exactly and what to expect on left and right clicks. (This can be set from Price Ladder -> Properties -> Order Entry, check "Enable Place Order Tooltip")
76. The Mini Chart in **Price Ladder** can now be placed either on the left or right side of the table. (This can be set from Price Ladder -> Properties -> Layout, check "Show Mini Chart", then select the side)
77. Added a property in **Price Ladder** which allows users to show the total volume for the contract (This can be enabled from Price Ladder -> Properties -> Layout tab -> Check "Show Vol Field")
78. Added a property in **Price ladder** which allows users to color in the entire Bid and Ask Size columns (This can be enabled from Price Ladder -> Properties -> Advanced tab -> Check "Color the Entire Bids / Asks Column")

BMD/Crude Palm Oil/JAN20			
MPCF20			
	Bid Size	Price	Ask Size
		2281	
		2280	
		2279	
		2278	
		2277	
		2276	
		2275	
		2274	
		2273	
		2272	
		2271	10
		2270	
		2269	
		2268	
		2267	
		2266	
		2265	289
		2264	58
		2263	34
		2262	46
		2261	75
	8	2260 (2)	
	20	2259	
	32	2258	
	44	2257	
	44	2256	
		2255	
		2254	
	10	2253	
		2252	
		2251	
		2250	
		2249	
		2248	
		2247	
		2246	

79. Added a property in **Price ladder** allows the user to click on a price and highlight it in the desired color. This is useful for setting targets and monitor if the market moves toward or away from them
(This can be enabled from Price Ladder -> Properties -> Advanced tab -> Check "Highlight Price at Click", then set the colors)

BMD/Crude Palm Oil/JAN20			
MPCF20			
Vol:			
	Bid Size	Price	Ask Size
		2271	10
		2265	289
		2264	84
		2263	157
		2262	82
		2261	29
	3	2260 (1)	
	40	2259	
	46	2258	
	37	2257	
	56	2256	
	10	2253	

80. Created a new structure in **Price Ladder** when Grouped Fields is enabled. You can now also select which fields will be included in the group. Below is an example with all fields enabled.

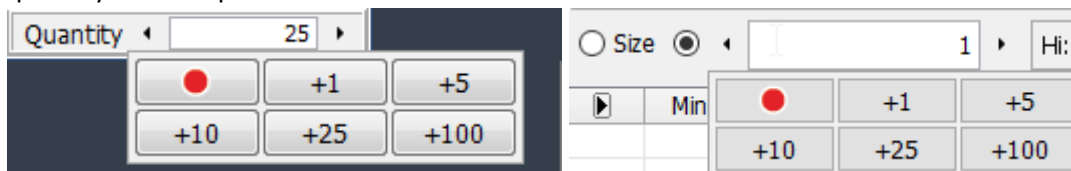
BMD/Crude Palm Oil/JAN20			
MPCF20	Hi: 2264	Pos:	
	Lo: 2247	Avg:	
	Chg: +1	OPL:	
	Vol: 9445	TPL:	

81. Some of the Properties in **Price Ladder** have been regrouped or moved between the tabs for easier access and a cleaner look.
(Check the Advanced and Layout tabs)

82. **Depth of Market** has received several features previously available to **Price Ladder** only: scale-in Order Functionality, Override Default Account with the option to use same account for view and placement, Show cancel button in Orders Column, Amend Order functionality on double click, and Show Implied Field with quick On/Off switch above the table.

Trades	Volume	Offset P/L		Bid Size	Bid	Ask	Ask Size		Offset P/L	Volume	Trades
		(MYR 50.00)		3	2133	2153	4		(MYR 1,050.00)		
		(MYR 0.00)			2132	2154			(MYR 1,100.00)		
		MYR 50.00			2131	2155			(MYR 1,150.00)		
		MYR 100.00			2130	2156			(MYR 1,200.00)		
		MYR 150.00			2129	2157	3		(MYR 1,250.00)		
		MYR 200.00			2128	2158			(MYR 1,300.00)		
		MYR 250.00			2127	2159			(MYR 1,350.00)		
		MYR 300.00			2126	2160	10		(MYR 1,400.00)		
		MYR 350.00			2125	2161	10		(MYR 1,450.00)		
		MYR 400.00			2124	2162	10		(MYR 1,500.00)		
		MYR 450.00	⊗ 5		2123	2163	10		(MYR 1,550.00)		
		MYR 500.00			2122	2164	10		(MYR 1,600.00)		
		MYR 550.00			2121	2165			(MYR 1,650.00)		

83. **Depth of Market** has also received the option to use Left Click for Limit Orders, and Right Click for Stop Orders. The “Use Left Click for Limit Orders and Right Click for Stop Orders” option can be enabled from Depth of Properties -> Order Entry -> Use Left Click for Limit Orders and Right Click for Stop Orders.
84. Hovering over the Quantity Editor in **Quotes Monitor**, **Price Ladder** or **Depth of Market** will display the quantity controls pad.



85. An option to synchronize the default quantity for the **Quotes Monitor**, **Price Ladder** and **Depth of Market** frames which are linked, and part of the same group, has been added. The “Synchronize With Linked Frames” option can be enabled from Quotes Monitor Properties -> Order Entry -> Override Default Quantity -> Synchronize With Linked Frames.
86. **Price Ladder** and **Depth of Market** can now optionally display the trading range with a different color scheme. The “Trading Range” option can be enabled and customized from Price Ladder/Depth of Market Properties -> Look -> Trading Range

		2901.00								
		2900.75								
		2900.50								
		2900.25								
		2900.00	662							
		2899.75	863							
		2899.50	438							
		2899.25	506							
		2899.00	638							
		2898.75	1136							
		2898.50	169							
		2898.25	151							
		2898.00	189							
		2897.75	99							
		2897.50	183							
		2897.25	117							
		2897.00	114							
		2896.75	122							
		2896.50	112							
		2896.25	52							
	63	2896.00	7633							
	80	2895.75	6090							
	93	2895.50	5291							
	84	2895.25	7499							
	125	2895.00	8984							
	108	2894.75	7025							
	164	2894.50	3554							
	133	2894.25	3013							
	183	2894.00	2187							
	132	2893.75	2114							
		2893.50	1762							
		2893.25	959							
		2893.00	349							
		2892.75								
		2892.50								
		2892.25								
		2892.00								

87. Added a price selector option in **Quotes Monitor, Price ladder, Depth of Market** and **Trade Ticket** that shows nearby prices.

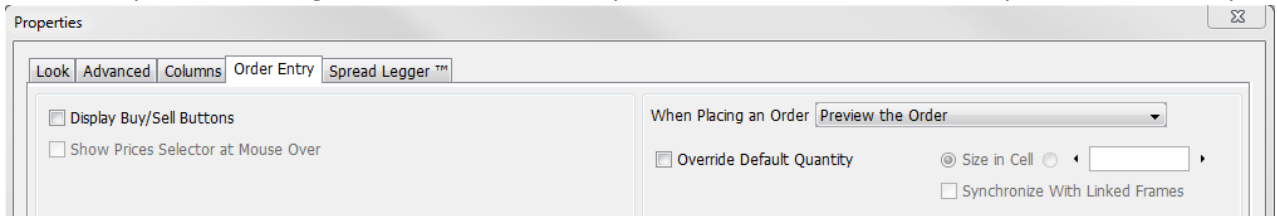
The "Show Prices Selector at Mouse Over" option can be enabled from Quotes Monitor/Price Ladder/Depth of Market Properties -> Order Entry -> Show Prices Selector at Mouse Over and Trade Ticket -> Show Prices Selector at Mouse Over

Sell		Bid	Ask
\$	2809.25		
\$	2809.00	\$ 58.51 (23)	58.52 (19) B
\$	2808.75	\$ 59.10 (46)	59.12 (26) B
\$	2808.50	\$ -0.60 (107)	-0.59 (602) B
\$	2808.25		
\$	2808.00	\$ 2808.00 (6)	2808.25 (86) B
\$	2807.75		
\$	2807.50		
\$	2807.25	\$ 402^0 (46)	412^4 (5) B
\$	2807.00	\$ 409^0 (1)	418^0 (7) B
\$	2806.75	\$ 400^0 (19)	418^0 (1) B
		\$ 405^4 (1)	407^0 (4) B
	414^4	\$ 407^6 (17)	422^4 (3) B
	12.36		
	5.00	\$ 4.50 (86)	5.00 (6) B

88. The "B" and "S" buttons in **Quotes Monitor** are now also available in the Last and Last Size columns.

Bid	Ask	Last	Last Size
\$ 1880 (9)	1980 (22) B	\$ 1950 P	B
\$ 1995 (10)	2004 (5) B	\$ 1997 (1)	B \$ 1 B
\$ 2040 (6)	2042 (1) B	\$ 2040 (1)	B \$ 1 B
\$ 1671.50 (7)	1672.00 (12) B	\$ 1671.50 (1)	B \$ 1 B
\$ 1672.00 (2)	1673.00 (14) B	\$ 1672.00 (1)	B \$ 1 B
\$ 1667.00 (2)	1668.00 (6) B	\$ 1666.00 (1)	B \$ 1 B

89. Order entry related settings in **Quotes Monitor Properties**, have been moved to a separate “Order Entry” tab.



90. An option to override the default quantity in **Quotes Monitor** has been added. This option can be enabled from Quotes Monitor Properties -> Order Entry -> Override Default Quantity -> select the custom quantity radio button

91. **Quotes Monitor** can now display estimated bid/ask values for strategies. Estimated values will appear with an ‘E’ suffix. This option can be enabled from Quotes Monitor Properties -> Advanced -> Check Enabled Bid/Ask Estimations, then select the color in Foreground

92. An option to highlight the selected row in **Quotes Monitor** has been added. This option can be enabled from Quotes Monitor Properties -> Advanced -> Select Row on Click -> Override Selected Colors – allows choosing the colors for the row selection

Contract	Last	Net Change	High	Low	Volume	Bid	Ask
ESM19	2895.25 (1)	-3.00	2900.00	2893.00	99251	2895.25 (73)	2895.50 (31)
ZCK19	358^4 (3)	-1^4	360^4	358^2	15694	358^2 (359)	358^4 (200)
ECLK19	64.28 (1)	-0.12	64.79	64.27	152781	64.28 (26)	64.29 (50)

93. A “Net Position” column has been added to the **Quotes Monitor** frame. This column can be enabled from Quotes Monitor Properties -> Columns -> Net Position

Quoted Instrument	Contract	Net Position	Bid	Ask
BMD/Crude Palm Oil/MAR19	MPCH19		S 1880 (9)	1980 (22) B
BMD/Crude Palm Oil/APR19	MPCJ19	Short 5	S 1995 (10)	2004 (5) B
BMD/Crude Palm Oil/MAY19	MPCK19	Long 1	S 2040 (6)	2043 (1) B

94. Optional color customization for the Bid and Ask columns in **Quotes Monitor** has been added. This option can be enabled from Quotes Monitor Properties -> Advanced -> Override Bid Colors & Override Ask Colors

Quoted Instrument	Contract	Net Position	Bid	Ask
BMD/Crude Palm Oil/MAR19	MPCH19		S 1880 (9)	1980 (22) B
BMD/Crude Palm Oil/APR19	MPCJ19	Short 5	S 1995 (10)	2004 (5) B
BMD/Crude Palm Oil/MAY19	MPCK19	Long 1	S 2040 (6)	2043 (1) B
BMD/FTSE Bursa Malaysia KLCI/MAR19	KLIH19		S 1671.50 (4)	1672.00 (1) B
BMD/FTSE Bursa Malaysia KLCI/APR19	KLIJ19		S 1670.00 (1)	1672.50 (1) B
BMD/FTSE Bursa Malaysia KLCI/JUN19	KLIM19		S 1662.00 (1)	1674.00 (2) B

95. Added a highlight to the Best Bid/Ask in **Quotes Monitor** if the selected account has a working order at the best bid/ask price. This highlight will take priority over other color settings, including row selection. This option can be enabled from Quotes Monitor Properties -> Advanced -> When Order At Price.

Last	Net Change	Prev. Settle...	High	Low	Bid	Ask
S 2063 S B	-28	2091	2090	2051	S 2056 (1)	2075 (1) B
S 75.63... B	-1.18	76.81	77.00	75.35	S 75.56 (1)	75.61 (3) B
S 98^0 P B		98^0				119^0 (14) B
S 112.7... B	1.20	111.55	113.85	110.70		
S 952^... B		952^0			S 945^6 (5)	954^2 (5) B
S 2820.... B	-4.25	2824.50	2829.25	2816.25	S 2820.50 (5)	2821.50 (5) B

96. Added the option to indicate prices with combined sizes in **Quotes Monitor, Price Ladder and Depth of Market**. This option can be enabled from Quotes Monitor Properties -> Advanced -> Mark Combined Sizes or Price Ladder/Depth of Market Properties -> Layout -> Mark Combined Sizes


Bid		Ask	
S	58.50 (49)	58.51 (8)	B
S	59.10 (15)	59.11 (8)	B
S	-0.60 (127)	-0.59 (623)	B
S	2808.00 (62)	2808.25 (2)	B

Chart	Bid Size	Price	Ask Size
		1674.00	22
		1673.50	39
		1673.00	22
		1672.50	18
		1672.00	5
	2	1671.5...	
	16	1671.00	
	22	1670.50	
	12	1670.00	
	17	1669.50	

	Bid Size	Bid	Ask	Ask Size
	794	366^4	366^6 ...	13
	1002	366^2	367^0	276
	606	366^0	367^2	449
	254	365^6	367^4	219
	1466	365^4	367^6	107
	323	365^2	368^0	127
	772	365^0	368^2	124
	177	364^6	368^4	231
	370	364^4	368^6	121
	215	364^2	369^0	161

97. A new column that displays the short description of the quoted instrument has been added to **the Quotes Monitor** frame and the **Orders & Positions Monitor** frame.

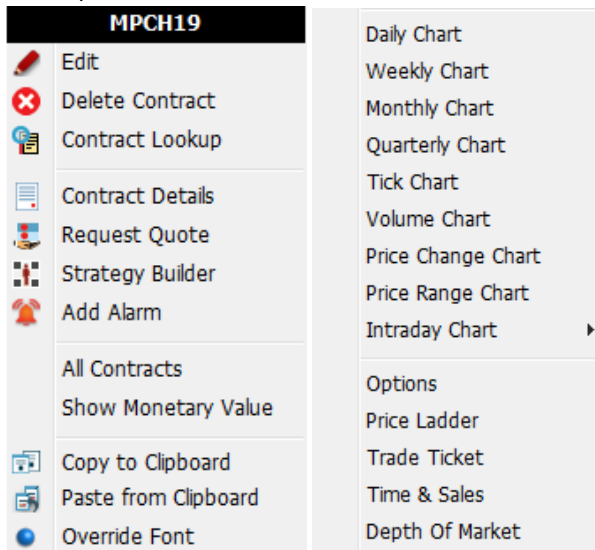
This column can be added from Quotes Monitor/ Orders & Positions Monitor Properties -> Columns -> Short Instrument

Quoted Instrument	Contract	Short Instrument
BMD/Crude Palm Oil/MAR19	MPCH19 	MPC-MAR19
BMD/Crude Palm Oil/APR19	MPCJ19	MPC-APR19
BMD/Crude Palm Oil/MAY19	MPCK19	MPC-MAY19
BMD/FTSE Bursa Malaysia KLCI/MAR19	KLIH19	KLI-MAR19
BMD/FTSE Bursa Malaysia KLCI/APR19	KLIJ19	KLI-APR19
BMD/FTSE Bursa Malaysia KLCI/JUN19	KLIM19	KLI-JUN19

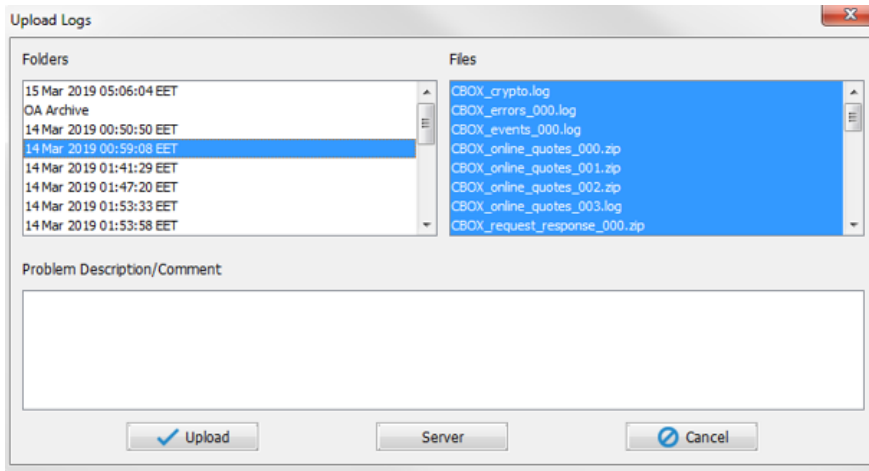
98. Orders that are now in a “Pending Cancel” state will appear with a ghosted/transparent icon to attract more attention. These icons also do not allow right click actions on them.

Hi:	3207.25	Lo:	3195.50			
Chg:	+8.25	Vol:	405			
OPL:	\$3,850.00	TPL:	\$3,850.00			
Place Account		View Account				
▼		▼				
▶	Mini Chart	Bid Size	Price	Ask Size	▶	Offset P/L
			3214.75			\$4,262.50
			3209.75	3		\$4,012.50
			3209.50	3		\$4,000.00
			3209.25	3		\$3,987.50
			3209.00	3		\$3,975.00
			3208.75	23		\$3,962.50
			3208.50	3		\$3,950.00
			3208.25	3		\$3,937.50
			3208.00	3		\$3,925.00
			3207.75	5		\$3,912.50
			3207.50	7		\$3,900.00
			3207.25			\$3,887.50
		1	3206.50			\$3,850.00
		2	3206.25			\$3,837.50
		5	3206.00			\$3,825.00
		3	3205.75			\$3,812.50
		3	3205.50			\$3,800.00
		23	3205.25			\$3,787.50
		54	3205.00			\$3,775.00
		3	3204.75			\$3,762.50
		3	3204.50			\$3,750.00
		3	3204.25			\$3,737.50
1			3111.00			(\$925.00)

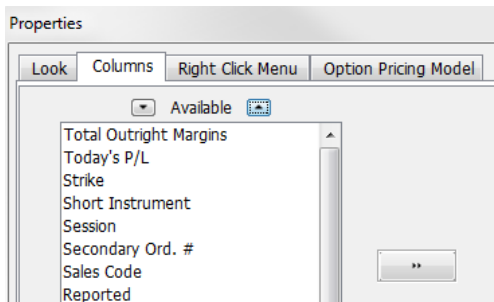
99. Icons have been added to the right click menu under the Contract column, in the **Quotes Monitor** frame. There are also new some new options for opening different frame based on the current contract (such as **Trade Ticket**)



100. The **Upload Logs** folder naming has been revamped, and now uses a friendlier naming scheme.



101. A button to sort the **Available** columns has been added, to all the frames that support adding or removing columns.

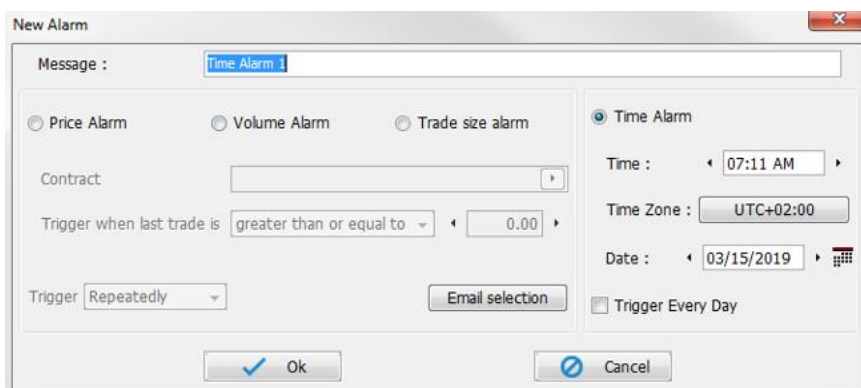


102. An option to use a different **sound** for orders, fills and partial fills placed on personal account versus orders placed by others.

This option can be found in General -> Properties -> Sound Mappings -> "Order was placed by others"

Sound	Audio File
Alarm	
Error	pop.wav
Warning	pow.wav
Confirmation	cowbell.wav
Fill	doodledo.wav
Reject	chimedwn.wav
Order was placed	pow.wav
Order was placed by others	pow.wav
Order was cancelled	
Crossable BWS order	
Screenshot	

103. An option to change the time zone for a **Time Alarm** has been added. Time zones can be sorted by city or exchange.



104. Added a new type of client-side contingency, **Time Weighted Average Price** or **TWAP**.

TWAP
✕

Contingency: Time-Weighted Average Price

Account [Redacted]

Contract MPCX22

Buy/Sell Buy

Quantity

Total Quantity 1

No. of orders 1

Chunk qty (approx.) 1

Duration (Exchange Time)

Start 11/23/2019 ⌘ 12:41 AM 🕒

Countdown **00:00:24**

Stop 11/23/2019 ⌘ 12:51 AM 🕒

Duration (minutes) 10

Interval between orders 10 minutes

Execution description

Placing 1 order at start time 11/23/2019 12:41:00 am (session closed at 11/25/2019 6:00:00 am)
Buy 1 MPCX22 @MKT

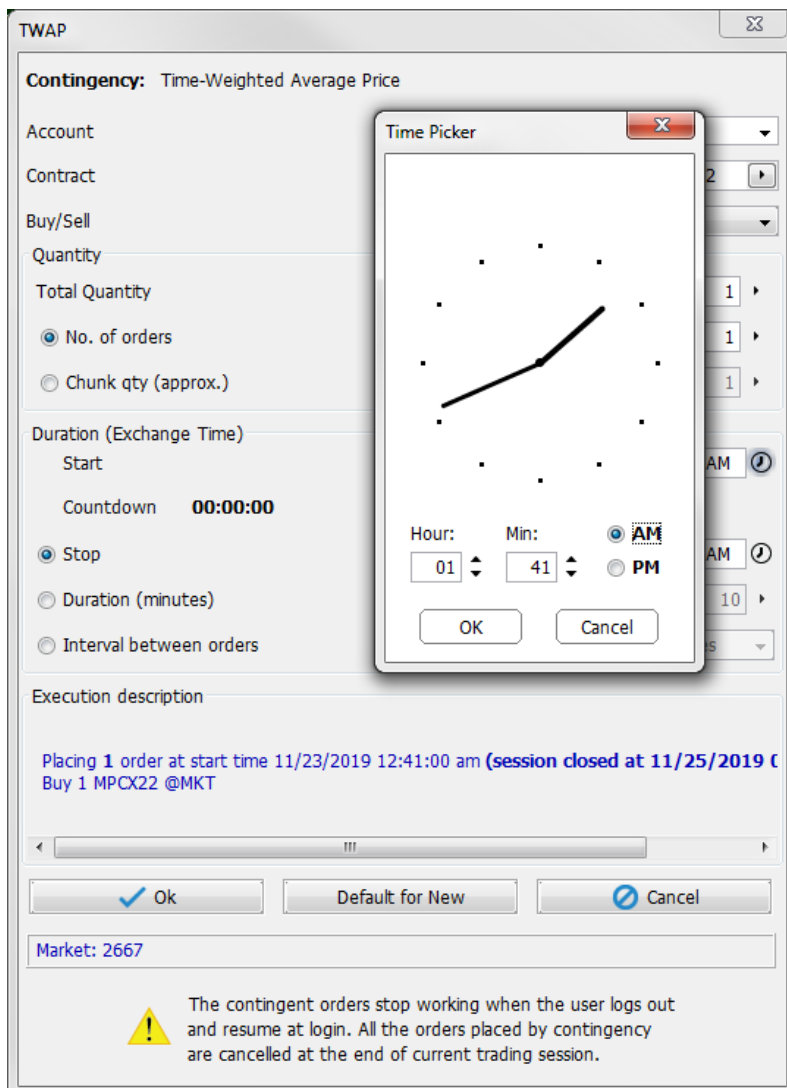
✔ Ok
Default for New
🚫 Cancel

Market: 2667

⚠

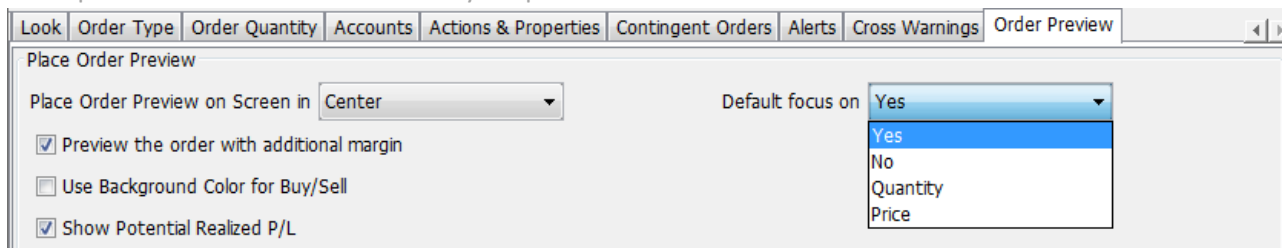
The contingent orders stop working when the user logs out and resume at login. All the orders placed by contingency are cancelled at the end of current trading session.

105. In frames such as **TWAP**, where a user can specify the exact time, the user can now open a Time Picker frame that allows the setting of the exact time with a few clicks rather than typing. The time can either be set by clicking on the analog clock or by adjusting the Hour / Min fields.



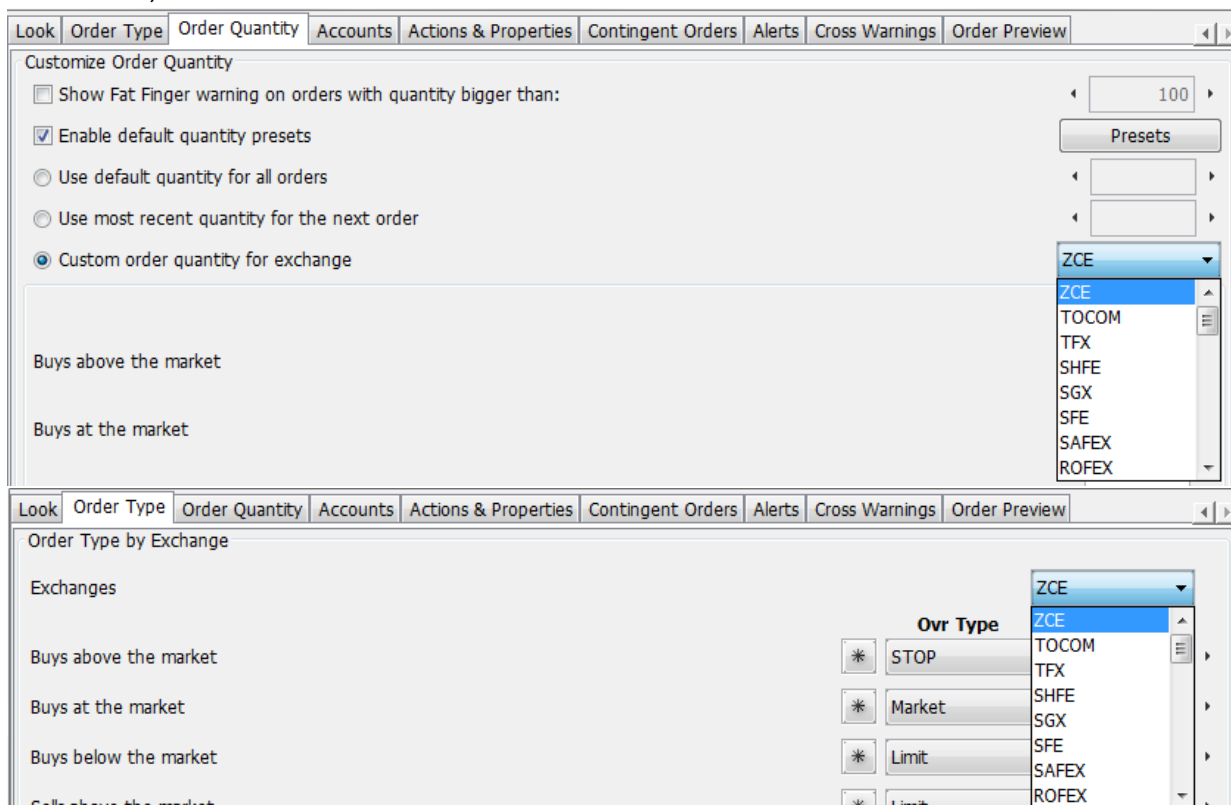
106. In **Order Preview**, if the focus is on the quantity or the price field, pressing Enter will trigger the order placement, and pressing Esc will close the dialog.
107. Created a new look for Order Ticket (Ticket Entry) as well as some new functions.
(Order Entry -> Show Order Ticket or press F6)
108. An option to change the focus to the Quantity field, Price Field or the Yes/No button in the **Order Preview** window has been added.

This option can be found in Order Entry Properties -> Order Preview -> Default focus on



109. An option to submit orders while in the focus is on the Special Instructions field in **Order Preview** has been added. You can press the Enter key after writing the text to submit the order right away.
This option can be enabled from Order Entry Properties -> Order Preview -> "Allow Submitting Orders While In Special Instructions Field"
110. An option to show alerts for unsolicited cancels done by the exchange (such as cancels done by Self-Match Prevention) has been added.
This option can be enabled from Order Entry Properties -> Alerts -> "Force popup alerts for Shared Order Book unsolicited cancel messages"

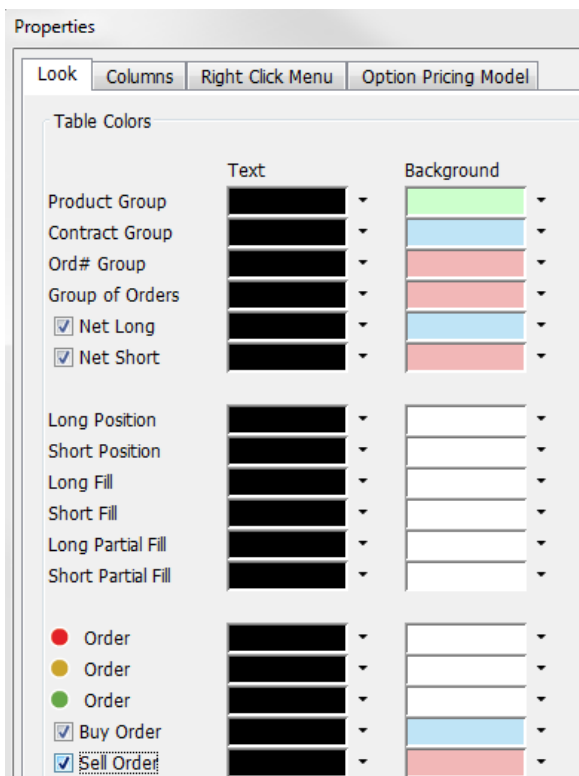
111. Exchange selection for Order Type and Order Quantity in **Order Entry Properties** is now focused under a drop-down menu, rather than tabs.



112. Support for F1/F4 and F6/F8 for buy and sell shortcut keys, has been added to the **Order Preview** window. This option can be enabled from Order Entry Properties -> Order Preview -> "Use "F1" to buy and "F4" to sell" - "Use "F6" to buy and "F8" to sell"
113. A quick selection pad for Favorite Accounts in **Order Preview** has been added. This option can be enabled from Order Entry Properties -> Live Trading -> Enable Favorite Accounts -> Enable Quick Selection Pad
114. If fill reporting is enabled and there are multiple fills in the same pop-up notification, there is now a checkbox at the top, allowing users to check all fills at once.



115. An option to change the colors for the Net Long/Short or Buy/Sell order has been added to the **Orders & Positions Monitor** frame. These will take priority over group order colors. This option can be enabled and customized from Orders & Positions Monitor Properties -> Look



116. Added a new way to calculate the Option Value for option orders. Users can now choose between Current Price or Fair Value.

(This can be set from Order Entry-> Properties -> Actions & Properties tab -> For the Option Value Calculation, choose between the two options)

117. The Special Instruction that has been sent with an order, can now be edited from the existing order in the **Orders & Positions Monitor** frame.

Qty	Contract	Special Instructions	Price
1	6AH19		0.7081
1	6AH19	New Instructions	0.7081
5	ECLJ19		58.34
3	ECLM19		59.09

118. Orders & Positions Monitor now displays the lifetime and expiration date for GTD filled orders.

119. An option to display Orders Buys/Sells has been added to the **Orders & Positions Monitor** frame.

This option can be enabled from Order & Positions Monitor Properties -> Look -> Show Order Buys/Sells

British Pound(Electronic) March 2019	New Order	6BH19	Buy	1
Canadian Dollar(Electronic) March 2019	New Order	6CH19	Sell	4
Euro FX(Electronic) March 2019	New Order	6EH19	Sell	2

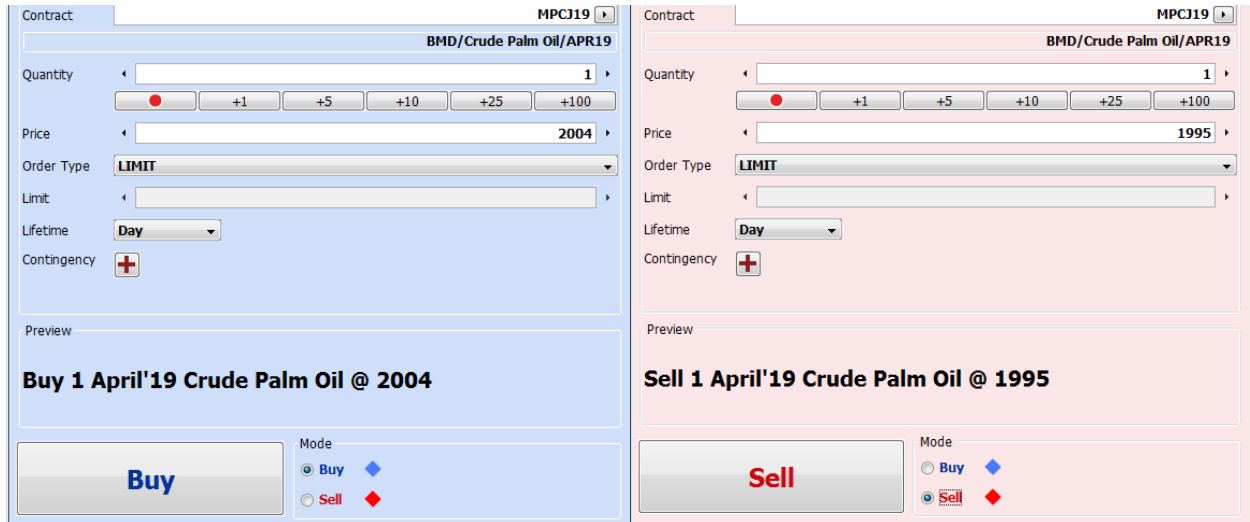
Options Profit/Loss	\$0.00	Order Buys/Sells	1/6
----------------------------	---------------	-------------------------	------------

120. A "Time" column has been added to the **Orders & Positions Monitor** frame that will display the last update time for the order (will use the data from Fill Time for Fills)

Status	Order Time	Fill Time	Time
New Order	03:33:26 PM		03:33:26 PM
Canceled	03:32:03 PM		03:32:03 PM
Canceled By #75746	03:29:46 PM		03:29:54 PM
New Order, Replaced #75745	03:29:54 PM		03:29:54 PM
New Order	03:29:14 PM		03:29:14 PM
Filled	02:28:45 AM	02:28:45 AM	02:28:45 AM

121. **Trade Ticket** background color now follows the selection of buy (blue) and sell (red). The default colors can also be changed to preference.

This option can be enabled and customized from Trade Ticket Properties -> Buy Mode/Sell Mode color selection



122. Pressing the Enter key in **Trade Ticket** will initiate order placement, even if the focus is on another field.
123. Added an option in **Trade Ticket** which determines whether or not the Account field follows the main Account from the Order Entry bar. When turned off, the Account field is non-editable and will always follow the main Account from the Order Entry bar. If checked, the field becomes editable and will always remember the last used account and ignore the Account from the Order Entry bar.

This option can be enabled and customized from Trade Ticket Properties -> Override Default Account

124. Added the Eligibility Level Nominal column option to **Account Risk Monitor**. The formula used for this column is the following:

$$\text{EligibilityLevelNominal} = 100 * (\text{TotalAccEquity} + \text{SecuritiesOnDeposit}) / \text{InitialMarginNominal}$$






Eligibility Level	Eligibility Level Incl Orders	Eligibility Level Nominal	Init Marg Nominal
1015.45%	1015.45%	1015.45%	\$48,755.00
			\$0.00
2726.11%	2726.11%	2726.11%	\$5,225.00
			\$0.00
			\$0.00
1248.14%	1248.14%	1248.14%	\$10,160.70

125. Added a **Margin Credit** field in **Account Information** and an optional Margin Credit column in **Account Risk Monitor**. This will be based on the value set in Risk Parameters in QBO. Margin Credit will also be used in the calculation of Purchasing Power.
126. Various **Trades Summary** and **Trades Recap** functionality adjustments for Entire book view, and manual selection.
127. **Trades Recap** has been made non-modal, for easier interaction. Trades Recap can now be initiated on right clicking an order, for that order only, or for a selection of orders.
128. **Trades Recap** refreshes automatically if a new fill is received on the loaded account, or if the account is changed.
129. Copy functionality has been implemented to the **Trades Recap** frame.

▶▶ CME/Australian Dollar/MAR19

Bought 1 MAR19 @0.7081

Total: Bought 1 MAR19 @0.7081

 Print  Save  Copy  Settings  Close